

Accessibility in Action

Alan Chase and Stacey Milbern
National Youth Leadership
Network



National Youth Leadership Network

The national voice for young leaders with disabilities

The Larger Picture

- What does accessibility mean?
 - What do you think of when you hear that word?
 - What is the connection between access and inclusion of different people?
 - Who is at the table?



New Ways of Looking at Accessibility



We are all from different communities and have different disabilities. What do we need to be included and at the “table”?



New Ways of Looking at Accessibility



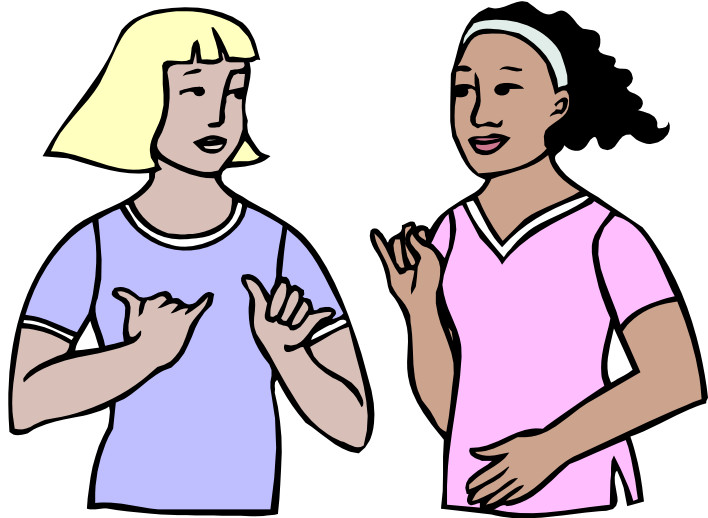
Example 1: Alan and Stacey have different disabilities. Alan knows Stacey needs wheelchair accessible meeting spaces. Stacey knows Alan needs large print. They both know their friends need ASL interpreters, structured agendas, Braille, and more.

New Ways of Looking at Accessibility



Example 2: Alan and Stacey work together in NC. Not everyone in their group has email. They have a phone tree to get in touch with members.

New Ways of Looking at Accessibility



Example 3: People that Alan and Stacey are friends with come from all different backgrounds. Alan and Stacey know that for these people to be involved, their meeting spaces have to feel safe for people (e.g. anti-racist, GLBT-friendly, hate-free and accepting of other identities).

Language



- Today we are going to focus on the words we use. We are doing this because this is often a barrier for people to be involved.
 - What are some ways you have felt excluded because of the words used? (e.g. was there ever a time you didn't know what was going on?)
- Accessible documents help foster a youth-friendly, disability-friendly space.



NYLN-KASA Access Guide

- What reading level is your writing?



- What size is your font? **AAA**

- Do you use pictures to explain things?



- Do you give information in alternative formats?

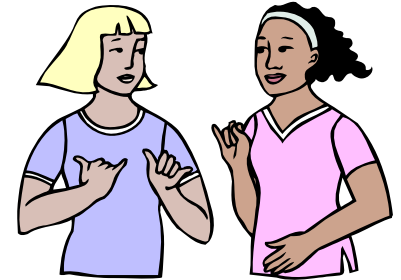


- Do you consider different learning styles?



NYLN-KASA Access Guide

- Use Arial or Veranda font.
- Use size 14.
- Make sure your language is easy to understand.
 - Short sentences.
 - One or two syllable words.
 - Common words.
- Explain what things mean.



NYLN-KASA Access Guide

- Use the Flesch-Kincaid Grade Level feature in Word.
 - To turn this on, go to Tools and click on Options.
 - Open Spelling and Grammar tab and make sure that “Check Readability statistics” is on.
 - After you turn this on, check your writing by doing a spelling and grammar check.
 - After Spelling and Grammar Check is done, it will tell you the grade level of your writing.

Contact Us:

- National Youth Leadership Network:
 - <http://www.nyln.org>
 - (866) 480-6565
 - P.O. Box 5908
Bethesda, MD 20824
- Alan:
 - achase11@nc.rr.com
 - (910) 612-2220
- Stacey:
 - stacey.milbern@gmail.com
 - (910) 578-9552

